



lingWAVES

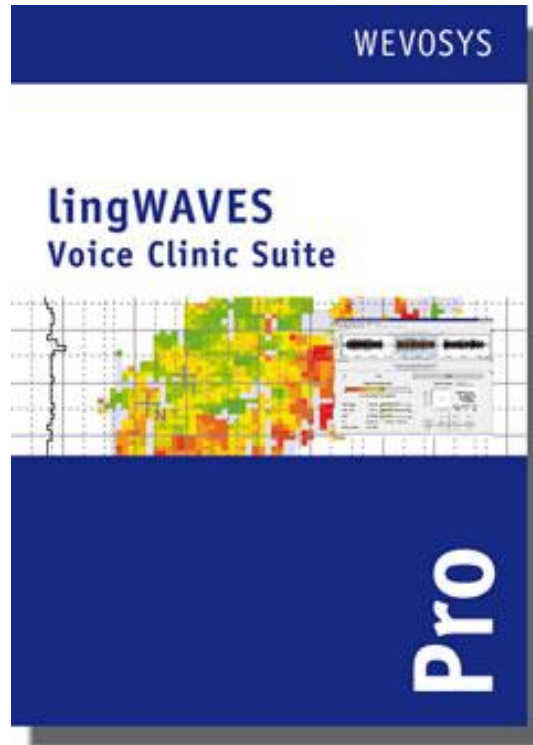
Installation Instructions for Windows 10

- ✓Voice Clinic Suite Pro
- ✓SLP Suite Pro VPR
- ✓Voice Protocol Set

Carol Bishop, Speech Pathologist
(MULTIMEDIA SPEECH PATHOLOGY, Australia)
July 2019

www.mmsp.com.au

Step 1: Install Software



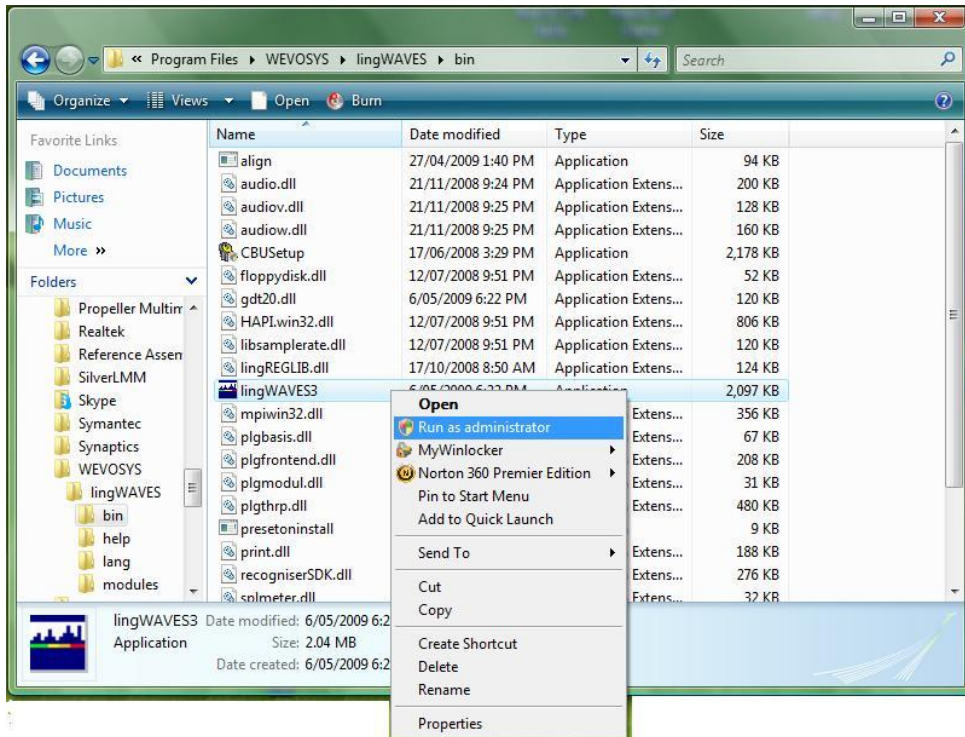
- Installs on a Windows 10 computer.
- Make sure you have admin rights for your computer to install and setup the folders needed to run the program.
- To install the program insert the lingWAVES global setup USB stick (attached to the WEVOSYS pen) into a USB port.
- Go to “This PC” and open the USB drive LINGWAVES and start “Setup.exe”.
- Follow the prompts and then lingWAVES will begin to install. After this has finished click ‘close’.

Step 2: Insert USB Dongle



- To run lingWAVES, you have to connect the USB licensing dongle to the USB Port at the end of the Connector Cable with the label “USB Dongle” before starting the program. Do not remove the USB dongle while using the program, otherwise your programs will be seen only as demos and will run out.
- The label on your dongle contains your personal system number. You will need to quote this number if you ever need to contact our support service.
- **If you are doing the 2 week trial, you don't need the dongle.**

Step 3 : Open lingWAVES as an Administrator



- The first time you open lingWAVES, you must Run as Administrator to set up modules, sound settings and data folders. After setup user accounts can now open from the icon on the desktop or Start menu for normal use.
- Go to the Start menu, then My computer and find the folder
C:\Program Files \ WEVOSYS\ lingWAVES\ bin\
lingWAVES3
- Right click on this file
- Select “Run as administrator.” from the drop down list.

Step 4: Upgrade Licence

- When you receive your lingWAVES package, only a basic license is installed on USB dongle. (Use this only for the 2 week trial)
- You have to do a USB dongle license upgrade to activate the package you have purchased.
- Plug in the USB dongle into your Connector cable.
- Start lingWAVES.
- In the top taskbar choose "Help > Dongle Upgrade".

There are two ways upgrading a lingWAVES USB dongle:

- 1. If your computer is connected to the internet, lingWAVES automatically checks if there is an upgrade available for your system.*
- 2. If there is no internet available on your computer, ask us to send a link to download a zipped upgrade file to save on your computer. Then repeat the steps above and click on "Search file system ..." and select the upgrade file we have sent.*

Contact us info@mmsp.com.au and quote your Dongle Number to request the upgrade file for the manual upgrade.

- You can also check that you have the latest software version and update if needed.
- In the top taskbar choose "Help > Updates".
- Follow the instructions to download and install the latest version if you don't have it.

Step 5: Prepare Sound Level Meter Microphone



Sound Level meter installation:

- Turn off your computer before you plug in the SPL microphone for the first time.
- Take the sound level meter from the package and make sure there is a 9V battery in it.

Step 6: Plug the Connector USB into the Sound Level Meter

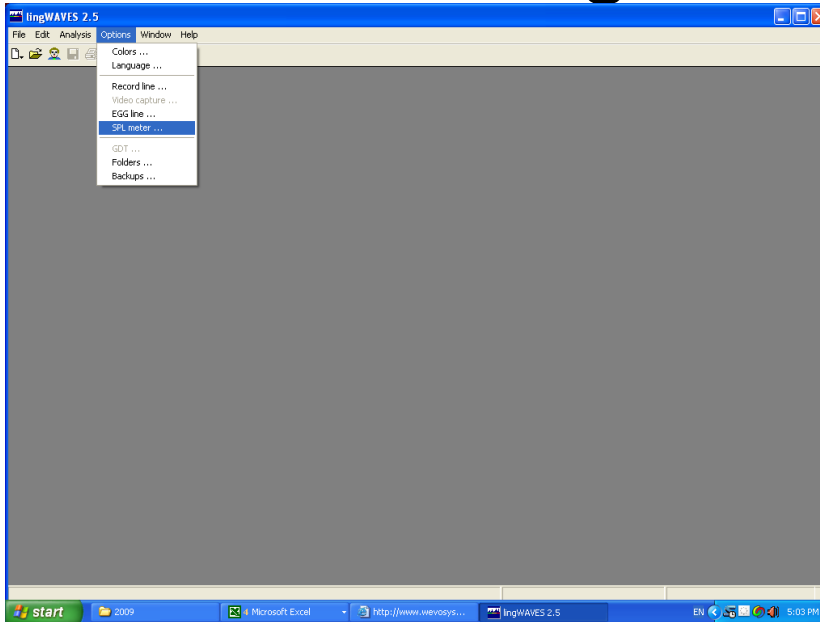


- The Sound Pressure Level meter (SPL) microphone has to be connected to the PC with the connector USB IIa Cable.
- The cable ends are marked green and blue to show which jacks they plug into on the side of the Sound Level Meter.
- Your computer must be turned off and the Sound Pressure level meter turned on before you plug the cables into your PC.

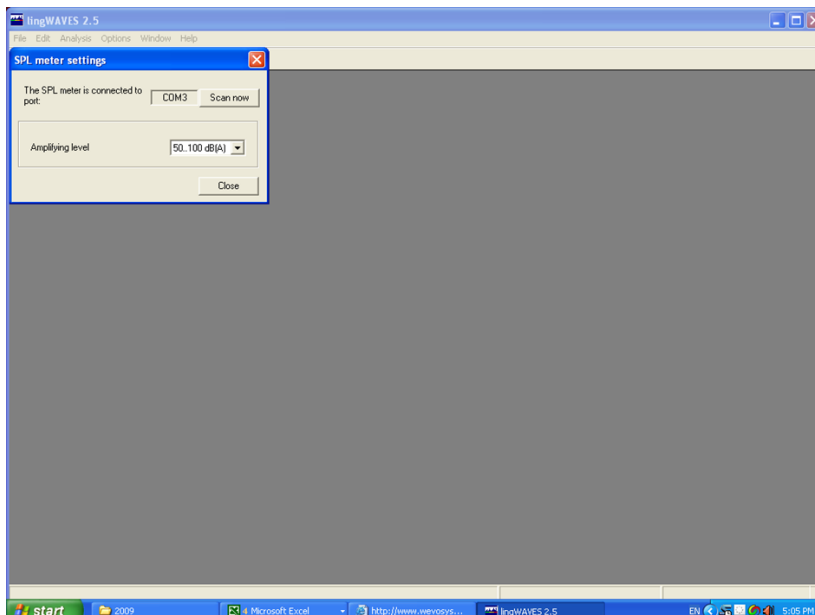
Step 7: Install the Connector USB

- The lingWAVES Connector USB is an easy to use and powerful hardware device that enables lingWAVES users to make standardized and certified voice recordings with the lingWAVES sound pressure level meter microphone.
- Two USB cable connections transfer an analog voice signal and digital sound pressure level measure (SPL) to a computer or laptop. The audio connection offers an integrated Hi-Fi sound card for high quality recordings. With this configuration users are able to do standardized and comparable voice assessments, regardless of which computer system is in use.
- Take the Connector USB IIa out of its package and follow the instructions enclosed in the package.

Step 8: Check the Sound Level Meter settings

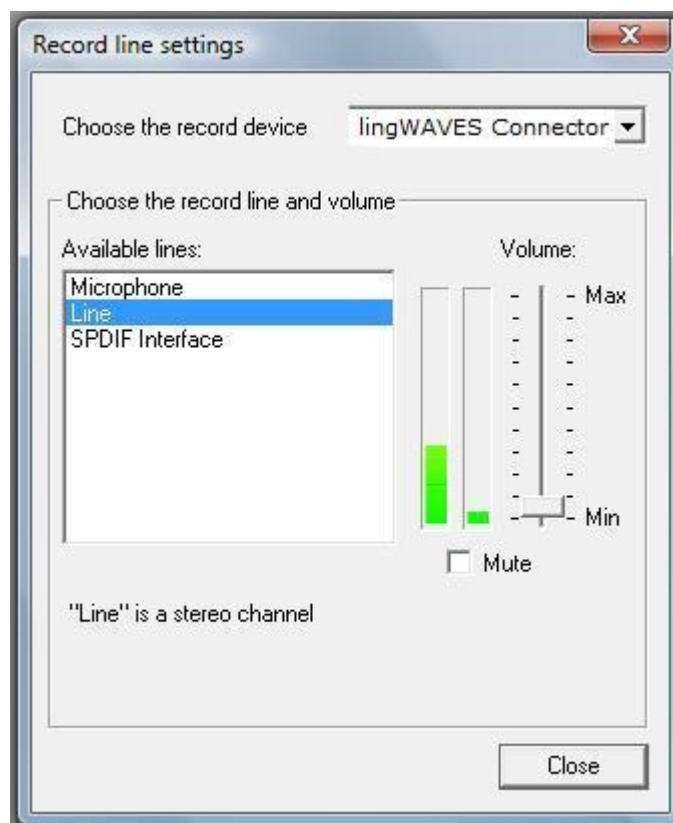


- Open lingWAVES as Administrator (see step 3), choose Option > SPL meter. Click “Scan now” to see a COM port.
- Set the amplifying level to 50 -100 dB (middle setting)



Step 9: Set the Record line settings

- Now choose Option > Record line.
- On the top of the window choose the record device “lingWAVES Connector IIa” from the list. If you have connected and switched on the SPL meter, you can now see and volume level in real time. Count in a loud voice 30 cm from the mic and set the slider so you see mainly yellow with very occasional red.
- Select the option “Preferred us as standard device, if present.
- Make sure that you always switch on and connect the SPL meter before you start lingWAVES. lingWAVES will save all audio and SPL settings. You don't have to do a setup again. But if you start lingWAVES without a lingWAVES connector USB and switched on SPL meter, lingWAVES will reset to default. If this happens, quit lingWAVES, connect the hardware to your computer, switch on the SPL meter and restart lingWAVES.
- **IMPORTANT:** check the SPL meter COM port and Record settings each time you open lingWAVES to make sure it is recording correctly.



Using laptops with internal speakers

- **IMPORTANT:** If you are using a notebook or desktop without external speakers please note that your inbuilt speakers may not play back any audio output after lingWAVES Connector installation. This is because lingWAVES Connector USB sound card is now your standard device for audio input and output, automatically setup by windows.
- We recommend that you plug external speakers into the Connector cable Headphone jack instead of using internal notebook speakers because of the poor sound quality in notebooks (you may not hear low frequency tones).
- If you still want to use your inbuilt notebook speakers for audio output open lingWAVES and go to the Options Tab and Playback Line to select you computer's speakers instead.

Running lingWAVES successfully

- **ANTIVIRUS:** Because lingWAVES needs to save information all the time in Realtime, some antivirus programs regard this as suspicious and interrupt the program. If you are having trouble, it runs better with the antivirus auto - protection temporarily suspended.
- **ACCESS RIGHTS:** These are the access rights needed by users on a network:

Directory with READ:

Installation directory (Standard):

c:\Program Files(86)\WEVOSYS\lingWAVES

Directories requiring full permissions FULL, CHANGE, CREATE, WRITE, READ:

Client Directory (Standard):

C:\Users\All Users\Roaming\lingWAVES\backups

Or C:\ProgramData\lingWAVES\clients

Backup directory (Standard):

C:\Users\All Users\Roaming\lingWAVES\backups

Or C:\ProgramData\lingWAVES\backups

GDT directory:

if used and setup by client

User directories:

c:\Users\%USERNAME%\AppData\Roaming\lingWAVES

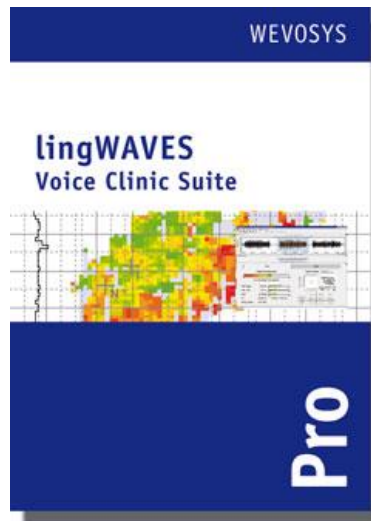
All User directories:

c:\Users\All Users\Roaming\lingWAVES

Temporary directories:

c:\Users\%USERNAME%\AppData\Local\Temp\lingWAVES

Where to find more help



- Your installation should be complete.
- For more help, click on the help button on the Menu bar in lingWAVES, or read the handbooks at www.wevosys.com/support/support_download.html
- Watch the “How to” videos at http://www.wevosys.com/support/lingWAVES_how_to/supprt_how_to.html and on the lingWAVES pages on our website www.mmisp.com.au
- Sample Files can be downloaded from www.wevosys.com/support/support_download.html
- You can also look at Frequently Asked Questions and solutions and request remote support from this site.
- Contact us at
MULTIMEDIA SPEECH PATHOLOGY
Ph: 0407293579
Email: info@mmisp.com.au
Website: www.mmisp.com.au